



LOGISTICS UK

Supply Chain Resilience

London
19 March 2025



LOGISTICS UK



Welcome

Phil Roe

President
Logistics UK

Today's sponsors & exhibitor

LOGISTICS UK

Sponsors

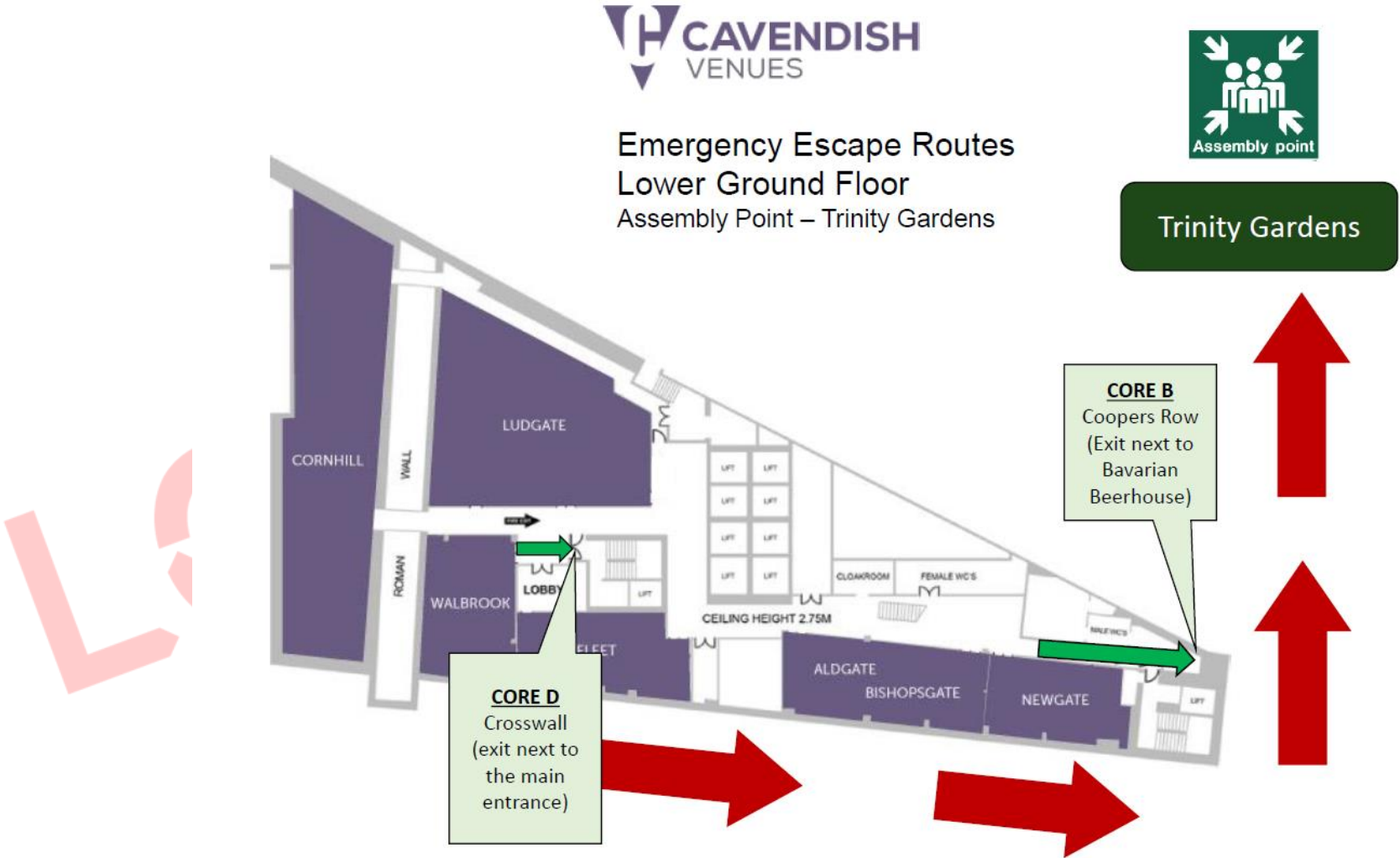


Customs
Support
Group



Exhibitor





Please use your phones!

LOGISTICS UK

Use Sli.do for your questions
Free WiFi network: America Square Conference
Password: AMSQ12345

Join at: www.sli.do #SCR25

#SCR25



Today's programme

LOGISTICS UK

Start	End	Session name
09:30:00	09:40:00	Chair's welcome & Logistics UK introduction
09:40:00	10:20:00	Keynote: Resilience of freight transport systems
10:20:00	11:10:00	Panel session: Government strategies and programmes to strengthen the resilience of the UK's supply chains
11:10:00	11:30:00	Coffee break & networking
11:30:00	12:10:00	Panel session: Cost of transportation as key to resilience
12:10:00	12:50:00	Panel session: Resilience for cities and urban infrastructure
12:50:00	13:20:00	Achieving resilience through the use of technology while mitigating technology-related risks
13:20:00	14:20:00	Lunch break & networking
14:20:00	15:00:00	Panel session: Resilience of international supply chains
15:00:00	15:40:00	Panel session: Resilience of online retail operation
15:40:00	16:10:00	Skills to unlock resilience
16:10:00	16:20:00	Chair's close & open discussion



Keynote: Resilience of freight transport systems

Professor Alan McKinnon
Kühne Logistics University

Use Sli.do for your questions
Join at: www.sli.do **#SCR25**



KÜHNE
LOGISTICS
UNIVERSITY

Resilience of Freight Transport Systems and Supply Chains in a Turbulent World

Professor Alan McKinnon

*Kühne Logistics University
Hamburg*

Supply Chain Resilience 2025

LOGISTICS UK

London

19 March 2025

Q&A

To ask your question please use the link:

<https://www.sli.do/>

#SCR25



LOGISTICS UK

Panel session: Government strategies and programmes to strengthen the resilience of the UK's supply chain

- **Chair:** Ben Garratt, Deputy Director – Public Affairs, Logistics UK
- Lydia Green, Head of Unlocking Space, UK Space Agency
- Laura Marquis, Deputy Director Logistics and Supply Chain Policy, Department for Transport

Use Sli.do for your questions
Join at: www.sli.do **#SCR25**

Unlocking Space for Business

During the 18-month pilot programme, 350 unique organisations engaged with USB initiatives, of which 160 were 'non-space' companies



UNLOCKING SPACE
FOR BUSINESS

350

unique organisations
engaged through USB
programme initiatives

160

'non-space' companies
participated in USB
events

35

were publicly listed
companies

27

end-user organisations
participated in exploration
workshops

USB INSIGHT REPORT:

The Space Advantage:
Enabling Business
Transformation in
Financial Services and
Transport & Logistics



Scan QR code to
read our Insight
Report

To find out more about our upcoming
funding & opportunities contact us at:
[unlockingspaceforbusiness@ukspac
eagency.gov.uk](mailto:unlockingspaceforbusiness@ukspac
eagency.gov.uk)

Financial Services



Insurance

Brokers, Underwriters



Banking

Retail, Commercial, Agricultural



Asset Managers

Hedge Fund, Infra, Equity Res.



Data Providers

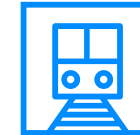
Rating Agencies

Transport & Logistics



Maritime

Ferry, Cruise, Cargo



Rail

R&D, Operations



Logistics

Storage, Handling, Distribution



Aviation

Airports

**Government strategies and programmes to
strengthen the resilience of the UK's supply chain**

LOGISTICS UK

Q&A

To ask your question please use the link:

<https://www.sli.do/>

#SCR25

LOGISTICS UK



Coffee break

Wednesday 19 March



LOGISTICS UK

Supply Chain Resilience

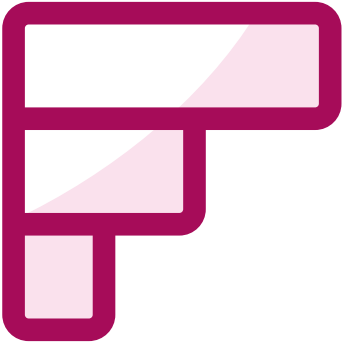
Logistics UK Annual Business
Conference

London
19 March 2025



slido

Please download and install the
Slido app on all computers you use



**Please choose the top three subject
areas/themes most interest you (with 1 being the
highest and 3 being the lowest)**

① Start presenting to display the poll results on this slide.



LOGISTICS UK

Panel session: Cost of transportation as key to resilience

- **Chair:** Michelle Gardner, Deputy Director – Policy, Logistics UK
- Nick Graham, NED and Board Advisor Logistics Leadership and Sustainability
- Annette Nemethova, Group Sustainability Lead, Gregory Distribution Ltd
- Andrew Scott, Product Director, TVS Group

Use Sli.do for your questions
Join at: www.sli.do **#SCR25**

Andrew Scott Product Director TVS Interfleet

The UK's broadest-based and most sustainable bodybuilder.



Producer of the UK's first fully electric concrete mixer and supplier of bodies to many leading fleet operators.

Build on gas, electric and hydrogen chassis.

Member of the eFREIGHT 2030 ZEHID consortium.





LOGISTICS UK

Panel session: Cost of transportation as key to resilience

- **Chair:** Michelle Gardner, Deputy Director – Policy, Logistics UK
- Nick Graham, NED and Board Advisor Logistics Leadership and Sustainability
- Annette Nemethova, Group Sustainability Lead, Gregory Distribution Ltd
- Andrew Scott, Product Director, TVS Group

Use Sli.do for your questions
Join at: www.sli.do **#SCR25**

Cost of transportation as key to resilience LOGISTICS UK

Q&A

To ask your question please use the link:

<https://www.sli.do/>

#SCR25



LOGISTICS UK

Panel session: Resilience for cities and urban infrastructure

- **Chair:** Jonathan Walker, Head of Cities and Infrastructure Policy, Logistics UK
- Richard Guy, Fleet and Plant Director, Amey
- Simon Keen, Partner, Commercial real estate team, Birketts
- Piers Windsor, Associate Director, Asset Management London, Segro

Use Sli.do for your questions
Join at: www.sli.do **#SCR25**

Q&A

To ask your question please use the link:

<https://www.sli.do/>

#SCR25

LOGISTICS UK

Achieving resilience through the use of technology while mitigating technology-related risks

- John Court, John Court Associates Ltd.
- Helen Flanagan, Product Director, Wincanton

Use Sli.do for your questions

Join at: www.sli.do **#SCR25**

**Achieving resilience through the use of technology
while mitigating technology-related risks**

LOGISTICS UK

Q&A

To ask your question please use the link:

<https://www.sli.do/>

#SCR25

LOGISTICS UK



Lunch break

Wednesday 19 March



LOGISTICS UK

Supply Chain Resilience

London
19 March 2025



A large container ship is docked at a port, with several blue cranes visible in the background. The ship is white with a red hull and is loaded with colorful shipping containers. The water is a light blue-green color. The sky is blue with some white clouds. A decorative vertical bar with a blue and white chevron pattern is on the right side of the image.

LOGISTICS UK

Panel session: Resilience of international supply chains

- **Chair:** Michelle Gardner, Deputy Director – Policy, Logistics UK
- Keiron Myall, Managing Director UK/IE, Customs Support Group
- Seamus Nevin, Chief Economist, MAKE UK

Use Sli.do for your questions

Join at: www.sli.do **#SCR25**

Q&A

To ask your question please use the link:

<https://www.sli.do/>

#SCR25



LOGISTICS UK

Panel session: Resilience of online retail operation

- **Chair:** Jonathan Walker, Head of Cities and Infrastructure Policy, Logistics UK
- Tim Jones, Director of Marketing, Communications & Sustainability, DPD UK
- Justin Laney, Partner & General Manager, John Lewis Partnership

Use Sli.do for your questions
Join at: www.sli.do **#SCR25**

FLEET RESILIENCE

Justin Laney

General Manager - Fleet

19 March 2025



JOHN LEWIS

WAITROSE

OUR FLEET

Our Partnership vehicle fleet consists of 5,100 vehicles which are serviced by 8 Partnership workshops and other local workshops.



2,200 vans

350 light trucks

580 heavy trucks

1,000 Cars

1,000 trailers



8 Partnership workshops

OUR COMMITMENTS

We'll be:

- Free of fossil fuel by 2030
- Net zero by 2035

OUR STRATEGY

We'll use:

- Renewable electricity for cars, vans and light trucks
- Biomethane for heavy duty trucks in transition to EV
- Biodiesel for remaining niches



VANS - EV ROLLOUT

- Large scale trials 2025/26
- Roll-out 2027 to 2030
- 2,500 vans and light trucks
- 200 sites



FLEET RESILIENCE RISKS

- Vehicles
 - Resilience
 - Obsolescence
 - Skills
- Infrastructure
 - Single point of failure
 - Cyber security
- Fuels
 - True sustainability
 - Availability and price





Tim Jones

Director of
Marketing &
Sustainability



OUR EUROPEAN PRESENCE

EUROPE'S LARGEST ROAD NETWORK

€15.7bn revenue

Over 30 European destinations

More than 1,977 hubs and depots

With 57,000 employees

Delivering over 2.1bn parcels a year (worldwide)

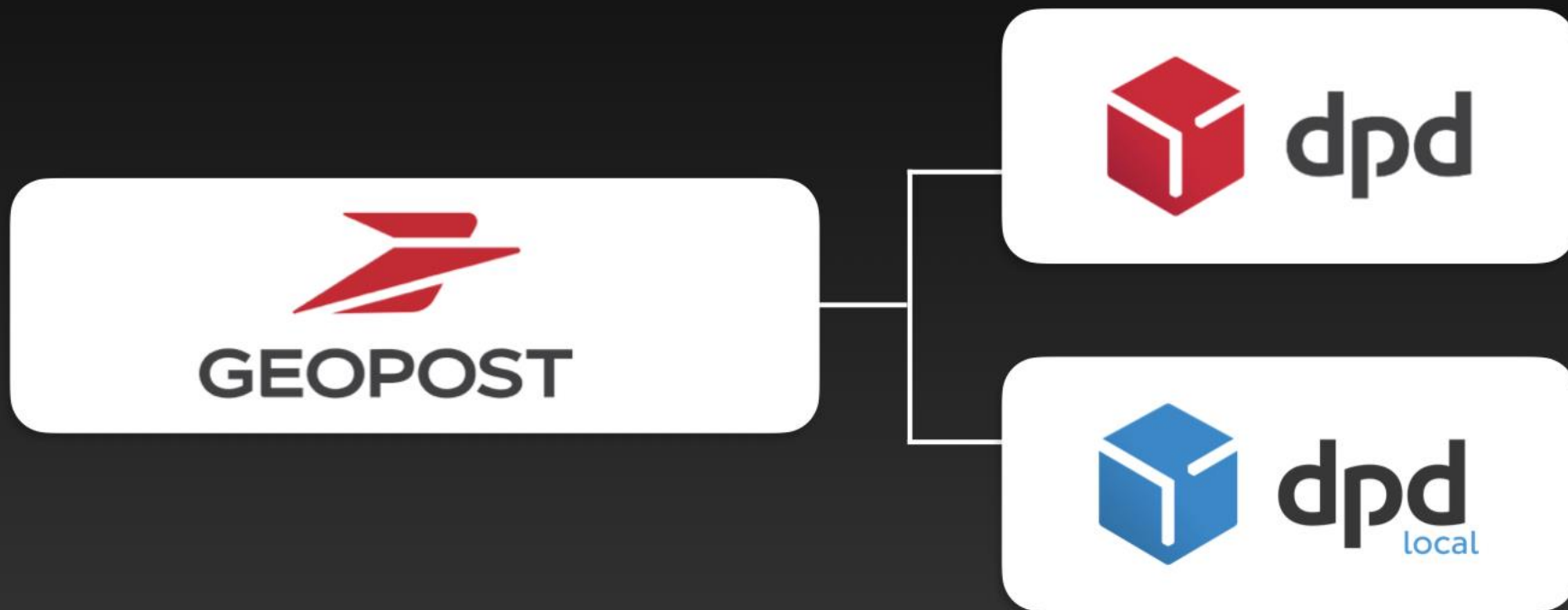
Destination customs clearance
in 10 countries

100,000 Strong Out Of Home
parcel shop/locker Network



GEOPOST

OUR PARENT COMPANY



- Predict
- Pickup
- App
- Classic
- Air Classic
- Air Express
- Direct
- Online

OUR

1

2

3

4

STRATEGY

1

DELIVER THE **BEST SERVICE**
THAT MONEY CAN BUY

2

USE THE **BEST TECHNOLOGY**
AVAILABLE

3

RETAIN, RECRUIT AND DEVELOP THE
MOST CARING AND **CUSTOMER-CENTRIC**
PEOPLE IN THE INDUSTRY

4

BE THE UK'S LEADER
IN **SUSTAINABLE DELIVERY**



We aim to be
the most

S U S T A I N A B L E

delivery
company

OUR PLAN

ELECTRIFICATION of
our **COLLECTION &
DELIVERY** fleet

CUSTOMER BENEFITS
**REPORTING CARBON
REDUCTION**

**LOW EMISSION
ALTERNATIVES** for
Transport fleet

**100% RENEWABLE
ELECTRICITY**
purchased or
generated



How can all this

BENEFIT

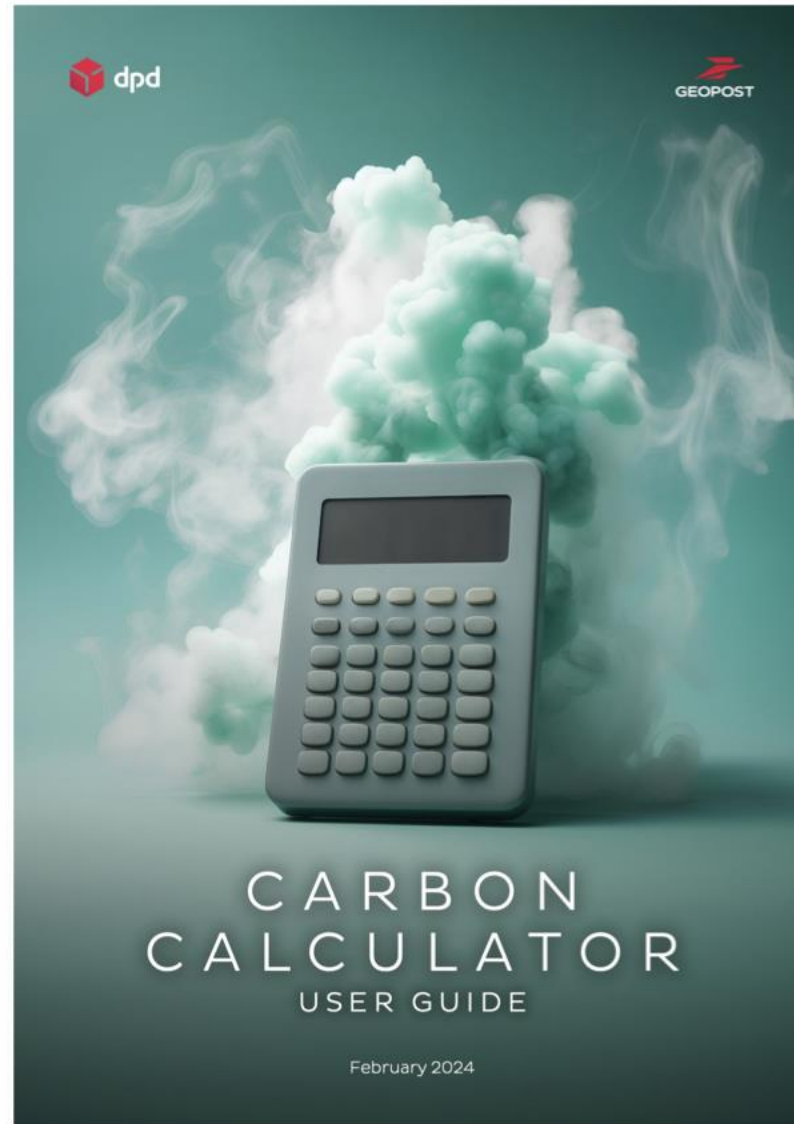
our

CUSTOMERS



CARBON CALCULATOR

- Available monthly, quarterly, annually
- Accredited by Smart Freight Centre, guarantees conformance to **GLEC** and **ISO 14083** standards





DELIVERING
the very
BEST
SERVICE TO YOUR
CUSTOMERS



GREAT BRANDS



SELFRIDGES & CO

ASOS

Barbour

NESPRESSO

currys

JD

vodafone

M&S
EST. 1884

UGG
australia

L'ORÉAL

amazon

W
Waterstones

John Lewis

sky mobile

RIVER ISLAND

EE

SPORTS
DIRECT.COM

hello
FRESH

IKEA



gousto

TikTok



O₂

next

UK DELIVERY OPTIONS



ENSURE THOSE URGENT PARCELS
ARRIVE BY 10:30AM OR BY NOON THE
NEXT WORKING DAY

BY 10:30 & BY 12

FOR ASSURED NEXT DAY DELIVERY
BEFORE THE CLOSE OF BUSINESS

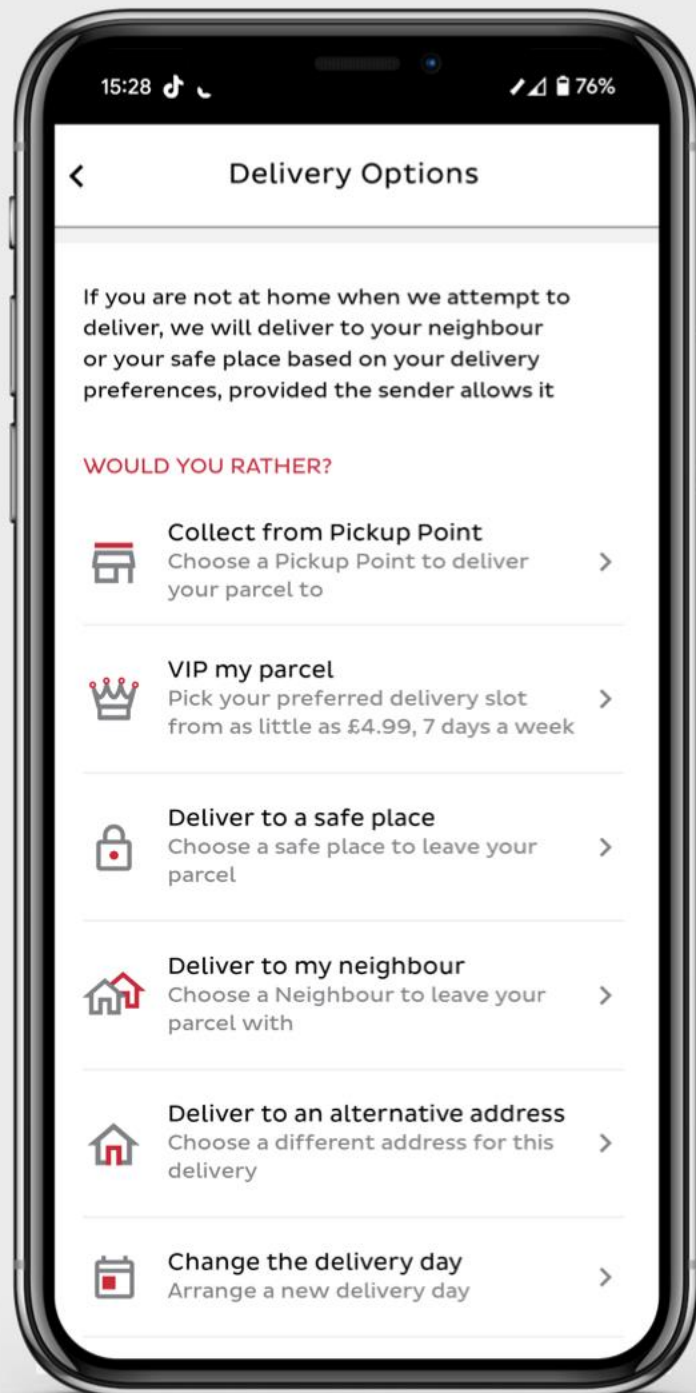
NEXT DAY

EXTEND THE WORKING WEEK
WITH SATURDAY DELIVERY BY
10:30, BY NOON OR NEXT DAY

SATURDAY

OUR SUNDAY DELIVERY SERVICE IS
NATIONWIDE ACROSS THE UK

SUNDAY



Giving your customers

CHOICE
— AND —
CONVENIENCE

Keeping updated with **NOTIFICATIONS**

SHIPPED

OUT FOR DELIVERY

DELIVERED TO NEIGHBOUR



ACME

We'll deliver your ACME parcel

TOMORROW

1st March 2024

[SHOW MY OPTIONS](#)

Your parcel: 1550 1648 576 687 H



ACME

Nazir will deliver your ACME order

TODAY

1 March 2024
between

10:03 - 11:03

[SHOW MY OPTIONS](#)

Your parcel: 1550 1648 576 687 H



ACME

Everybody needs good neighbours, that's why
we've delivered your ACME parcel to

BOARDMAN at Number 26

[SHOW ME](#)

Your parcel: 1550 1648 576 687 H

Robot delivery

Cartken Robots

Evie

Operating for 6 months
In Milton Keynes



25 stops per day





UK NPS SCORE

76



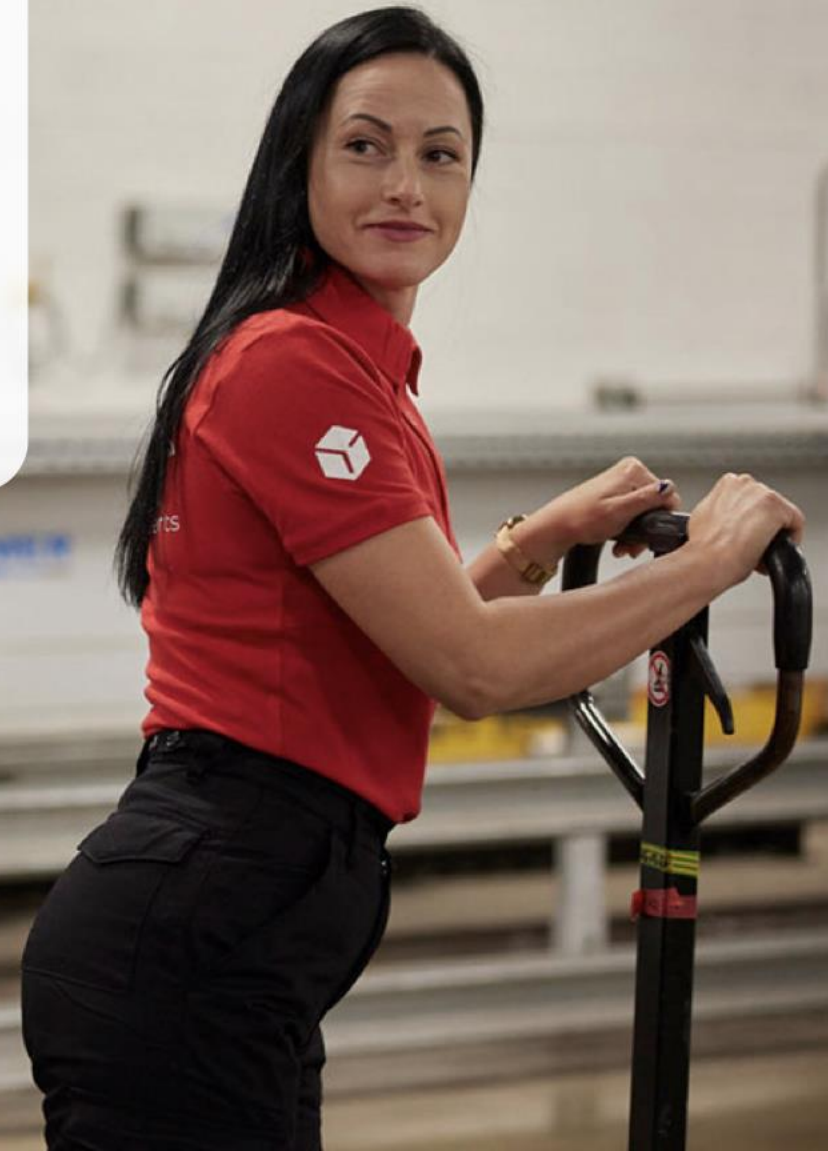
Excellent

DPD UK

Reviews 1,561,960 • Excellent



✓ VERIFIED COMPANY





dpd

THANK

you



Your delivery experts





LOGISTICS UK

Panel session: Resilience of online retail operation

- **Chair:** Jonathan Walker, Head of Cities and Infrastructure Policy, Logistics UK
- Tim Jones, Director of Marketing, Communications & Sustainability, DPD UK
- Justin Laney, Partner & General Manager, John Lewis Partnership

Use Sli.do for your questions
Join at: www.sli.do **#SCR25**

Q&A

To ask your question please use the link:

<https://www.sli.do/>

#SCR25

A large container ship is docked at a port, with several blue cranes visible in the background. The ship is loaded with colorful containers. The sky is blue with some clouds. A decorative vertical bar with a blue and white chevron pattern is on the right side of the image.

LOGISTICS UK

Skills to unlock resilience

- Bethany Windsor, Head of Skills and Generation Logistics, Logistics UK
- Leigh Anderson, Managing Director, Bis Henderson Recruitment

Use Sli.do for your questions
Join at: www.sli.do **#SCR25**

Q&A

To ask your question please use the link:

<https://www.sli.do/>

#SCR25



Closing session

Michelle Gardner

Deputy Director – Policy, Logistics UK

Use Sli.do for your questions

Join at: www.sli.do **#SCR25**

Today's sponsors & exhibitor

LOGISTICS UK

Sponsors



Customs
Support
Group



Exhibitor





Logistics UK's Logistics Awards 2025

Park Plaza Westminster Bridge, Thursday 11 December

Enter now or book your table to secure your place at this sell-out event at
www.logistics.org.uk/logistics25



LOGISTICS UK

Supply Chain Resilience

Thank you!

