



**Keep Your Tires In Control.**  
Bypass business impediments  
with digital tire monitoring.



# The challenges for every fleet manager are maximized uptime and cost efficiency.

## Challenge accepted.

Discover the benefits of digital tire monitoring for commercial vehicles.

**Downtimes are a real issue - digital tire monitoring will make your vehicles more profitable and safe.**

Tire related issues are big breakdown causes for commercial vehicles. Trouble often starts with creeping loss of air pressure, and if the problem goes unnoticed, a breakdown and tire damage may occur. So, if you want to keep your business moving, keep your tires rolling:

**ContiPressureCheck™ and ContiConnect™ will provide you with accurate tire status information - and help prevent unscheduled downtimes, dangerous tire issues and avoidable tire problems on the road.**





# Engineered to keep you in control.

In-cab or  
fleet-wide.

Enhanced safety, extended tire life, and extra low operating costs - digital tire monitoring by Continental keeps you in control:

**ContiPressureCheck™** provides drivers with precise status information by continually monitoring air pressure and temperature via the tire sensor. The system displays data in the drivers cab and warns the driver before a condition becomes critical. ContiPressureCheck™ is a complete, driver focused system for single vehicles and trailers that can be integrated into third party telematics solutions.

**ContiConnect™** takes digital tire monitoring to the next level. The system conveniently connects multiple vehicles and helps fleet managers switch from inflexible manual service routines to targeted in-time maintenance. Tire issues are immediately identified upon return to the fleet yard.

Creeping air loss can be creepy.  
Just relax. And fix issues conveniently.





# Built for Earthmovers. Truckers. **And you.**

## Tire monitoring, as versatile as your business

Whether you operate a single earthmover or a large fleet of heavy trucks: Digital tire monitoring with ContiConnect™ and ContiPressureCheck™ provides drivers, fleet managers and maintenance staffs with all they need to know to keep the flow. The systems are scalable and adaptable to suit diverse requirements.

### DRIVER SAFETY

#### In the cab, right in-time

ContiPressureCheck™ delivers continuous driver feedback via in-cab display (or a Bluetooth-enabled Android device) and warns before problems arise.

### PEAK PERFORMANCE

#### Uptime is what counts

Maxed out uptime and service only when appropriate - that's what drives profit!

### LIFECYCLE OPTIMIZATION

#### Don't crash the bottom line

Under-inflation or overheating cause almost 90% of all tire breakdowns - optimize your tire life cycle with tire diagnostics!

### INTELLIGENT TIRE

#### Get a precise perspective

With intelligent tires you'll get an inside view on every tire - pressure and temperature are constantly monitored. The sensor is available pre-installed with a new set of tires, or can be retro-fitted any time in the tire life cycle.

### WEB PORTAL

#### With accuracy and acumen

View reports, access analytics, track tire performance. The web portal allows convenient tire monitoring especially for big fleets.

### DATA TRANSFER

#### Detailed diagnostics, digitally delivered

Each intelligent tire provides a rich stream of information - Identify issues in real time, upon return to the fleet yard, or online.

### SERVICE OPTIMIZATION

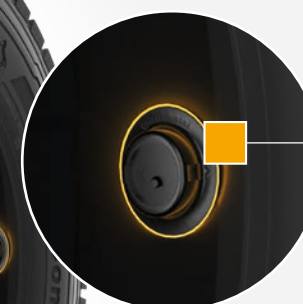
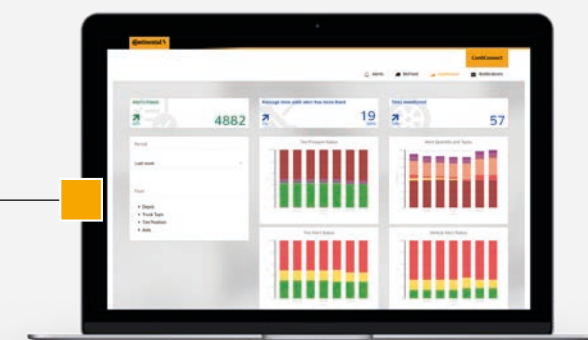
#### Keep maintenance costs at bay

Switch from manual check routines to targeted in-time service - works for single vehicles or large fleets.

### FUEL ECONOMY

#### Drive down costs

At least when it comes to fuel savings - properly serviced tires will improve your fleet's fuel consumption.





# Smart wheel. **Sensor inside.**

With 20% under-inflation,  
casing life is reduced by 30%.  
Verifying proper air pressure  
reduces tire wear and  
maximizes uptime!

## **Roadworthy & robust - the sensor**

Tires are considered among the top expenses for commercial fleets. So, maintaining them at accurate inflation levels will allow for a longer treadwear and the casing will accommodate more retreads. Continental tire sensors are at the core of both ContiPressureCheck™ and ContiConnect™, constantly measuring temperature and air pressure from inside the tire, the optimal position for precise data measurement. Intelligent tires are available factory-fitted or alternatively as a retrofit solution.

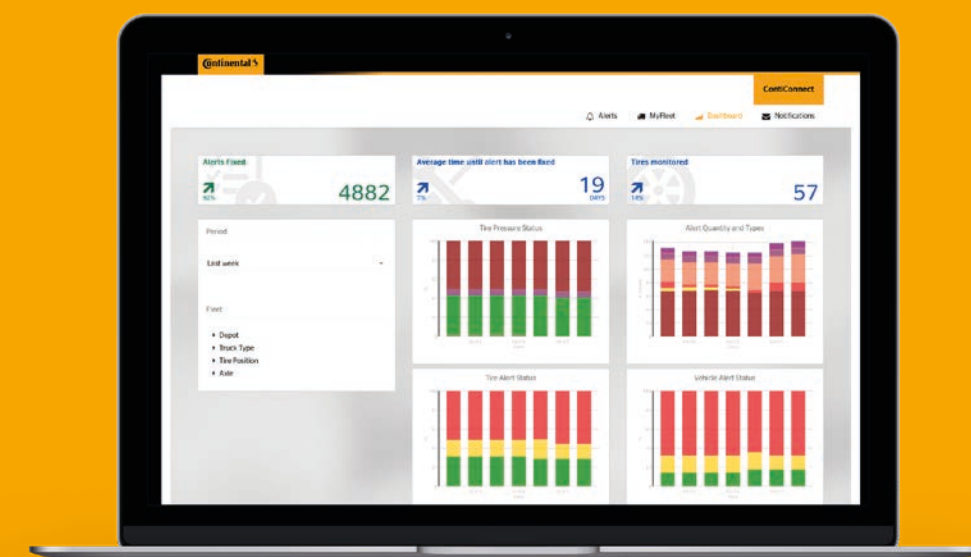




# Digital. And down to detail.

## Manage the entire life cycle

The ContiConnect™ web portal allows fleet managers to conveniently access low pressure alerts, track data over time or view detailed reports and analytics. If low tire pressure or high temperatures are detected, you will receive an alert in order to proactively fix the problem.



**ContiConnect™ Yard** grabs all tire data whenever your trucks return to the yard. The yard reader station wirelessly picks up the sensor data and transmits it to the ContiConnect™ web portal via cellular network.

**ContiConnect™ Live** provides real-time tire pressure and temperature data to the fleet manager via the web portal regardless of the vehicle's location



# Modular. Makes sense.

When it comes to tire life cycle management, you can either stick to regular maintenance schedules – and hope for the best.



## Tire Sensor

Mounted onto the inner liner.  
Available retrofitted or factory-fitted.

Or discover the insights of digital tire monitoring – and ensure maximum profitability for your fleet!

## Your individual tire monitoring solution

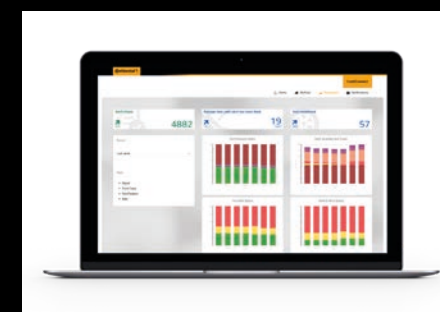
Continental digital tire monitoring solutions are scalable to various demands. ContiPressureCheck™ and ContiConnect™ follow a modular approach – with different components, depending for instance on the size of your fleet and the requirements of your business.

### Yard Reader Station



The connectivity component that receives data wirelessly from the tire sensor upon returning to the yard.

### ContiConnect Web Portal



Browser-based web interface for access to data, statistics and reports.

### Central Control Unit



The CCU, mounted to the vehicle, receives signals, evaluates data and displays the tire status onscreen or via a telematic system.

### Display



Real-time information inside the driver's cab.

### Hand-Held Tool



Used for system initialization and wireless sensor inspection.

# Don't ride over your bottom line.

## ContiPressureCheck™ Tire Pressure and Temperature for Single Vehicles

		Single	Integrated
		The tire-pressure monitoring system for individual vehicles that allows the driver to check the tire pressure on a built-in display.	The tire-pressure monitoring system for individual vehicles that can be integrated into an on-board (telematics) system.
Components	ContiPressureCheck™ display	■	
	In-vehicle telematics integration - proprietary		■
	In-vehicle telematics integration - Android app		■
	ContiConnect™ web portal		
	Third-party platform integration		■
Connectivity	Central control unit	■	■
	Yard reader station		
	Telematics box		■
	Bluetooth dongle		■
	Cables	■	■
Tires & sensors	Tire sensor	■	■
	Intelligent tire	■	■
Kits & accessories	Hand-held tool	■	■

■

 necessary hardware components

■

 optional components

Get the ideal tire monitoring solution from Continental.

## ContiConnect™ Tire Pressure and Temperature for Multiple Vehicles

		Yard	Live
		The solution for remotely monitoring the tire pressure of multiple vehicles that return regularly to dedicated check-points.	The solution for remotely monitoring the tire pressure of multiple vehicles regardless of their location.
Components	ContiPressureCheck™ display		
	In-vehicle telematics integration - proprietary		■
	In-vehicle telematics integration - Android app		■
	ContiConnect™ web portal	■	■
	Third-party platform integration	■	■
Connectivity	Central control unit		■
	Yard reader station	■	
	Telematics box		■
	Bluetooth dongle		■
	Cables		■
Tires & sensors	Tire sensor	■	■
	Intelligent tire	■	■
Kits & accessories	Hand-held tool	■	■

■

 necessary hardware components

■

 optional components



